

National Crane 9103A

Quick Reference

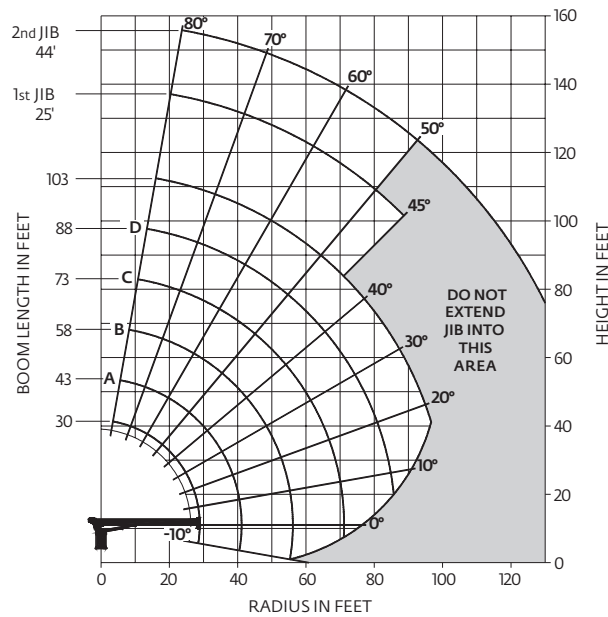
Capacity: 23,6 t (26 USt) rating

Boom: 31,4 m (103 ft)

• 34,44 m (113 ft) maximum tip height (main boom)

• 47,24 m (155 ft) maximum tip height main boom and 13,41 m (44 ft) jib

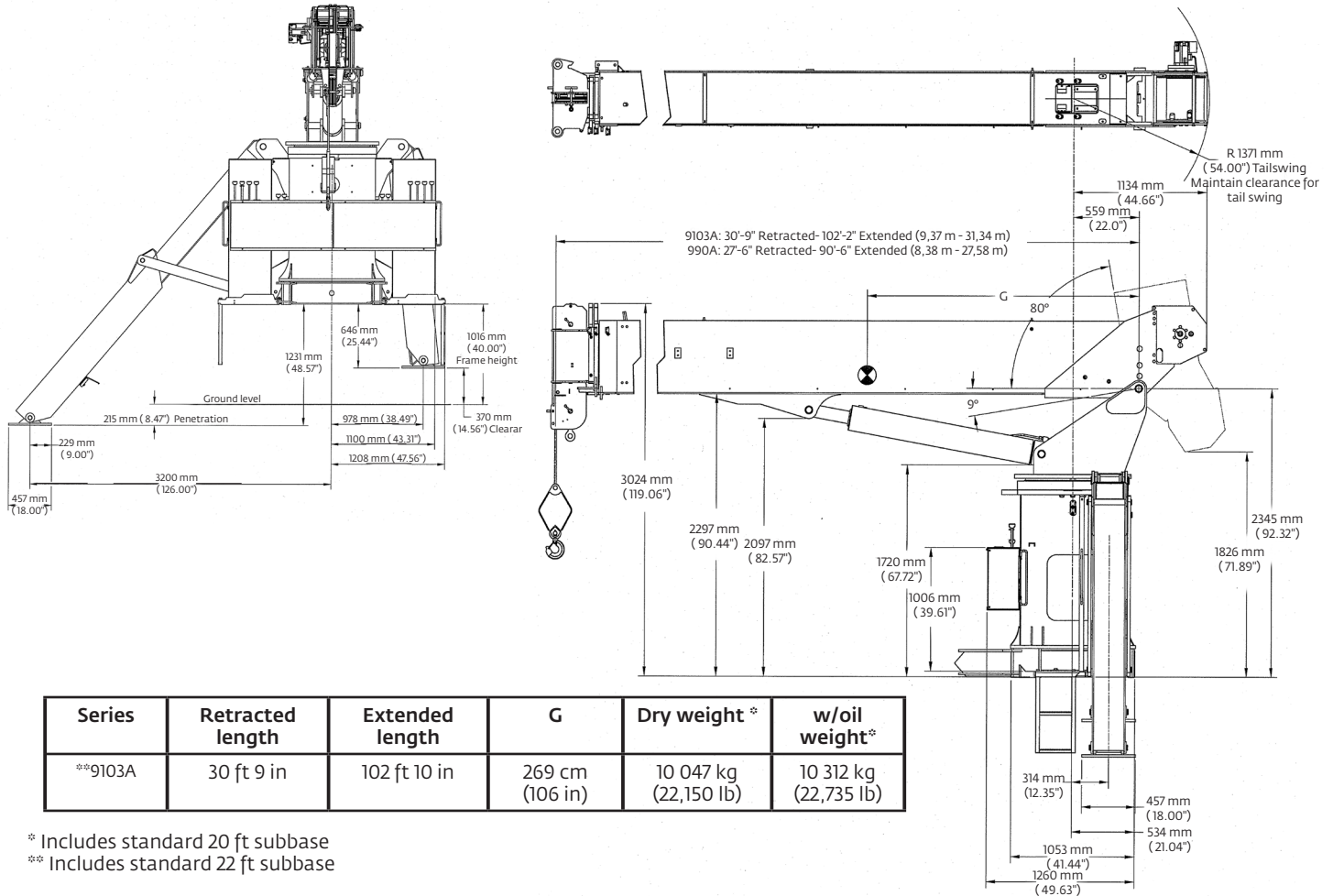
Working range: 103 ft main boom, full span outrigger, with 44 ft jib



Load chart: 103 ft main boom, full span outrigger, with 44 ft jib

LOAD RADIUS (FEET)	LOADED BOOM ANGLE	30 ft BOOM (lb)	LOADED BOOM ANGLE	A 43 ft BOOM (lb)	LOADED BOOM ANGLE	B 58 ft BOOM (lb)	LOADED BOOM ANGLE	C 73 ft BOOM (lb)	LOADED BOOM ANGLE	D 88 ft BOOM (lb)	LOADED BOOM ANGLE	103 ft BOOM (lb)	LOAD RADIUS (FEET)	LOADED BOOM ANGLE	25 ft JIB (lb)	LOADED BOOM ANGLE	44 ft JIB (lb)
5	78.5	52,000											30	76.5	3950		
8	72.5	34,850											35	74.5	3450	76.5	2550
10	68.5	29,050	75.5	26,400	80	24,950							40	72	3050	75	2500
12	64.5	24,750	72.5	22,500	78	21,250							45	70	2600	73	2450
14	60	21,250	69.5	19,600	76	19,350	79.5	17,750					50	67.5	2250	71	2250
16	55.5	18,950	67	17,300	74	16,350	78	15,350	80	14,300			55	65	1950	69	1850
20	45	14,350	60.5	14,000	69	13,750	74	12,650	77.5	11,700	80	10,550	60	62.5	1800	67	1650
25			52	10,800	63.5	10,550	70	10,150	74	9400	77	9100	65	60	1550	64.5	1350
30			42.5	8500	57.5	8500	65.5	8350	70.5	7750	74.5	7150	70	57.5	1300	62.5	1200
35			32.5	6500	52.5	6900	62	6800	67.5	6400	71.5	6050	75	54.5	1100	60	1050
40					45.5	5650	57	5600	64	5450	68.5	5150	80	51.5	900	58	950
45					38	4500	52	4700	60	4600	65.5	4500	85	48.5	700	55.5	900
50					28	3450	46.5	3950	56	3950	62	3900	90	45.5	450	53	750
55							40.5	3150	52	3300	59	3350	95			50.5	600
60							34	2550	47.5	2750	55.5	2900					
65									42.5	2200	52	2450					
70									37.5	1750	48	2050					
75									31	1350	44	1650					
80											39.5	1250					
85											34.5	900					
0		4500	0	2200	0	800											
ADD TO CAPACITIES WHEN NO JIB STOWED (lb)		850		600		450		350		300		250					

Dimensions



More information about this product can be found in the National Crane Series 900A Product Guide.

Specifications

Boom

Comes equipped with a 31,4 m (103 ft) four-section boom. This model can be equipped with a 13,41 m (44 ft) two-section jib.

Outriggers

"A" frame main outriggers with a 21ft span. RSOD 16 ft out and down, rear stabilizers for standard behind-cab mount.

Overload protection

National Crane boom trucks are equipped with overload protection. A Load Moment Indicator (LMI) is standard on all 900A machines. The LCD display is visible in full or low light and displays all crane load lifting values simultaneously. Includes Work Area Definition System (WADS).

Torsion box

The stronger standard torsion box improves rigidity, reduces truck frame flex and reduces the need for counterweight.

Easy Glide Boom Wear Pads

Easy Glide boom wear pads reduce the conditions that cause boom chatter and vibration. The net result is smoother crane operation.

Speedy-reeve boom tip and sheave blocks

These standard features simplify rigging changes by decreasing the time needed to change line reeving.

Pre-painted components

Painting crane components before assembly reduces the possibility of rust, improves serviceability and enhances the appearance of the machine.

Control valve

State of the art control valve provides smoother operation. The design eliminates parts, reducing repair costs and improving the machines serviceability.

Serviceability

- Bearings on the boom extend and retract cables can be greased through access holes in the boom side plates
- Boom sections are supported by one hydraulic extend cylinder, minimizing maintenance