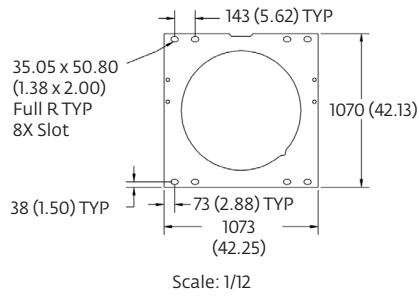
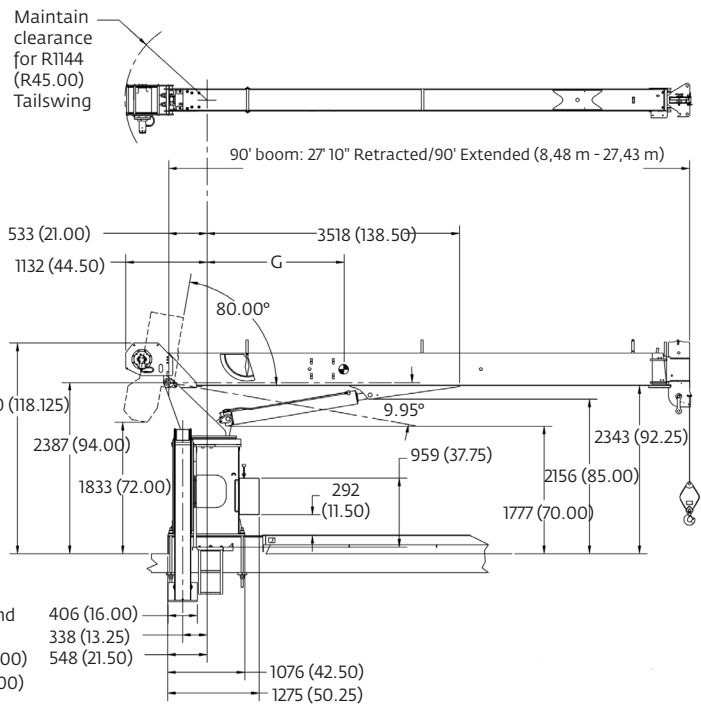
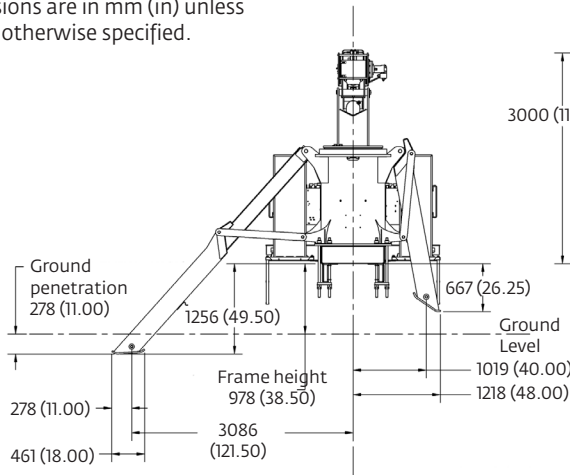


Dimensions



Dimensions are in mm (in) unless otherwise specified.



Subbase	Weight	C.G. length
Standard 18 ft	1229 kg (2710 lb)	2,87 m (113 ft)
Standard 20 ft	1345 kg (2965 lb)	2,87 m (113 ft)
Standard 22 ft	1444 kg (3184 lb)	3,18 m (125 ft)

Subbase C.G. are located from center of rotation

Series	Retracted length	Extended length	Subbase	G (wet)	Dry/Wt	With oil/wt
690E2	27 ft 10 in	90 ft	20 ft	1,98 m (78.1 in)	7700 kg (16,976 lb)	7970 kg (17,571 lb)

More information about this product can be found in the National Crane Series 600E2 Product Guide.

Specifications

Boom

Comes equipped with a 27,43 (90 ft) four-section boom. This model can be equipped with a 7,62 m - 13,72 m (25 ft - 45 ft) two-section jib

Outriggers

Equipped with "A" type boxed slide outriggers and ASH rear stabilizers.

Controls

Dual side operator stations.
Dual engine accelerators.

Overload protection

National Crane boom trucks are equipped with overload protection. A hydraulic capacity alert system is standard on all 600E2 machines.

Torsion box

The stronger standard torsion box improves rigidity, reduces truck frame flex and reduces the need for counterweight.

Easy Glide Boom Wear Pads

Easy Glide boom wear pads reduce the conditions that cause boom chatter and vibration. The net result is smoother crane operation.

Speedy-reeve boom tip and sheave blocks

These standard features simplify rigging changes by decreasing the time needed to change line reeving.

Pre-painted components

Painting crane components before assembly reduces the possibility of rust, improves serviceability and enhances the appearance of the machine.

Serviceability

- Bearings on the boom extend and retract cables can be greased through access holes in the boom side plates

- Boom sections are supported by one hydraulic extend cylinder, minimizing maintenance

Hoist

Single speed planetary winch.