

# National Crane 638E2

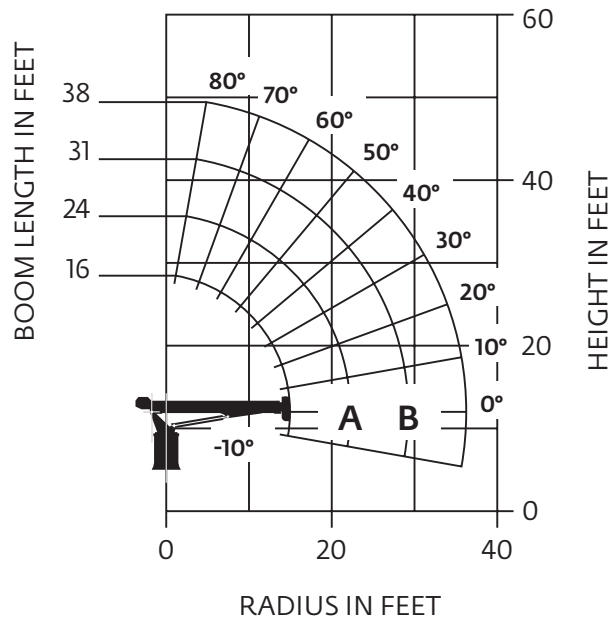
## Quick Reference

**Capacity:** 18,1 t (20 USt) rating

**Boom:** 11,58 m (38 ft)

- 14,63 m (48 ft) maximum tip height (main boom)

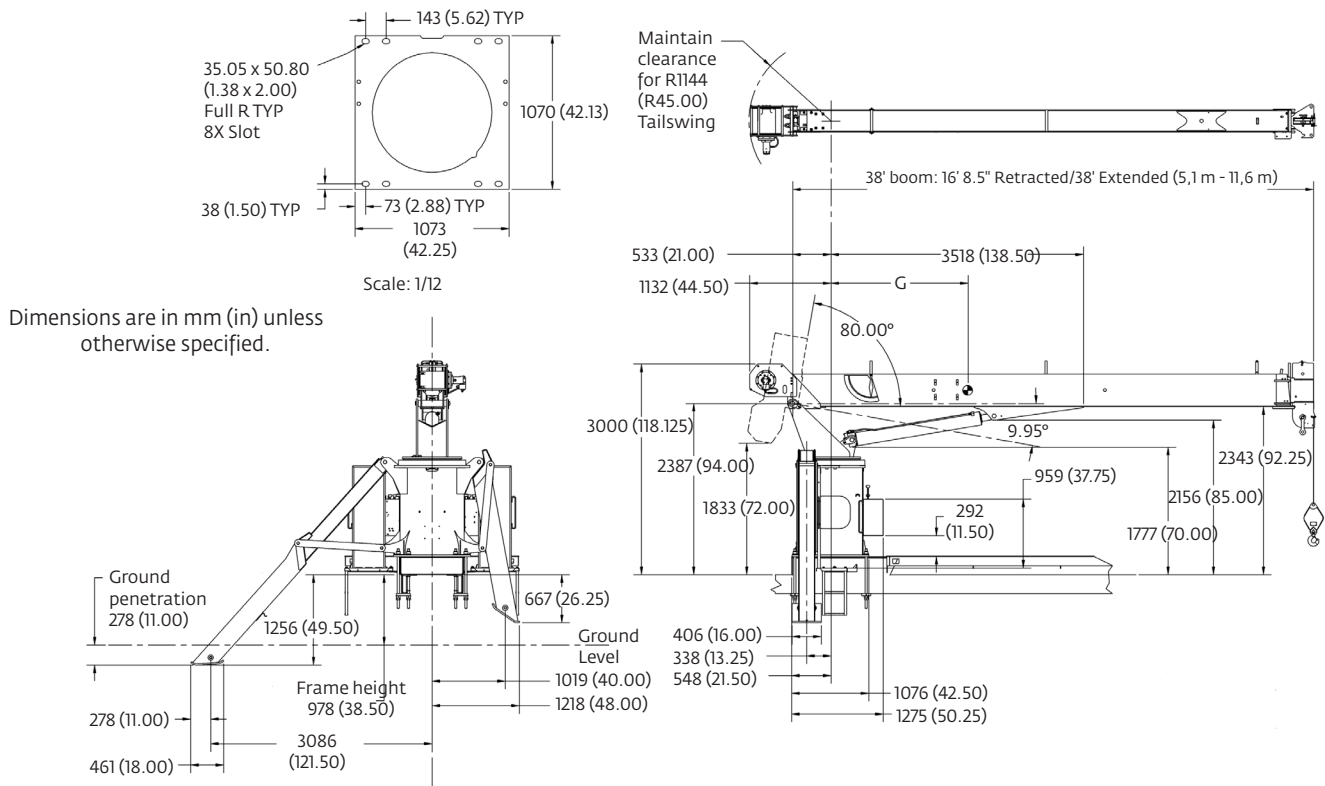
**Working range: 38 ft main boom, full span outrigger**



**Load chart: 38 ft main boom, full span outrigger**

LOADED RADIUS (ft)	LOADED BOOM ANGLE (deg)	16 ft BOOM (lb)	LOADED BOOM ANGLE (deg)	A 24 ft BOOM (lb)	LOADED BOOM ANGLE (deg)	B 31 ft BOOM (lb)	LOADED BOOM ANGLE (deg)	38 ft BOOM (lb)
5	67	40,000						
6	63	36,150						
8	55.5	30,250	68	28,550	74	27,500	77	25,750
10	45.5	25,600	62.5	24,300	69	23,450	73	22,200
12	34	21,900	56.5	20,900	65	20,150	70.5	19,200
14	15	16,750	50	18,150	60.5	17,800	66.5	17,050
16			43	16,200	56	15,800	64.5	15,200
18			34.5	14,200	51.5	14,150	59.5	13,750
20			26.5	12,200	47	12,900	57	12,500
25					31.5	10,150	46	9950
30							35.5	8350
35							18.5	6200
	0	10,850	0	7050	0	5100	0	3850

## Dimensions



Subbase	Weight	C.G. length
Standard 18 ft	1229 kg (2710 lb)	2,87 m (113 ft)
Standard 20 ft	1345 kg (2965 lb)	2,87 m (113 ft)
Standard 22 ft	1444 kg (3184 lb)	3,18 m (125 ft)

Subbase C.G. are located from center of rotation

Series	Retracted length	Extended length	Subbase	G (wet)	Dry/Wt	With oil/wt
638E2	16 ft 7 in	38 ft 3 in	18 ft	1,23 m (48.3 in)	6192 kg (13,651 lb)	6462 kg (14,246 lb)

*More information about this product can be found in the National Crane Series 600E2 Product Guide.*

## Specifications

### Boom

Comes equipped with a 11,58 m (38 ft) three-section boom.

### Outriggers

Equipped with "A" type boxed slide outriggers and ASH rear stabilizers.

### Controls

Dual side operator stations.  
Dual engine accelerators.

### Overload protection

National Crane boom trucks are equipped with overload protection. A hydraulic capacity alert system is standard on all 600E2 machines.

### Torsion box

The stronger standard torsion box improves rigidity, reduces truck frame flex and reduces the need for counterweight.

### Easy Glide Boom Wear Pads

Easy Glide boom wear pads reduce the conditions that cause boom chatter and vibration. The net result is smoother crane operation.

### Speedy-reeve boom tip and sheave blocks

These standard features simplify rigging changes by decreasing the time needed to change line reeving.

### Pre-painted components

Painting crane components before assembly reduces the possibility of rust, improves serviceability and enhances the appearance of the machine.

### Serviceability

- Bearings on the boom extend and retract cables can be greased through access holes in the boom side plates

- Boom sections are supported by one hydraulic extend cylinder, minimizing maintenance

### Hoist

Single speed planetary winch.