

National Crane 560E2

Quick Reference

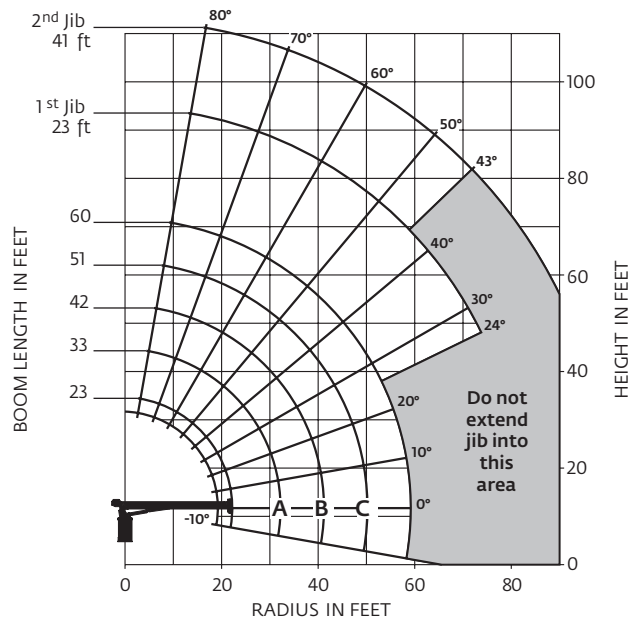
Capacity: 16,3 t (18 USt) rating

Boom: 18,26 m (60 ft)

• 21,03 m (69 ft) maximum tip height (main boom)

• 33,53 m (110 ft) maximum tip height (main boom and 7,01 m - 12,50 m [23 ft - 41 ft] two-section jib)

Working range: 60 ft main boom, full span outrigger, with 23 ft - 41 ft jib



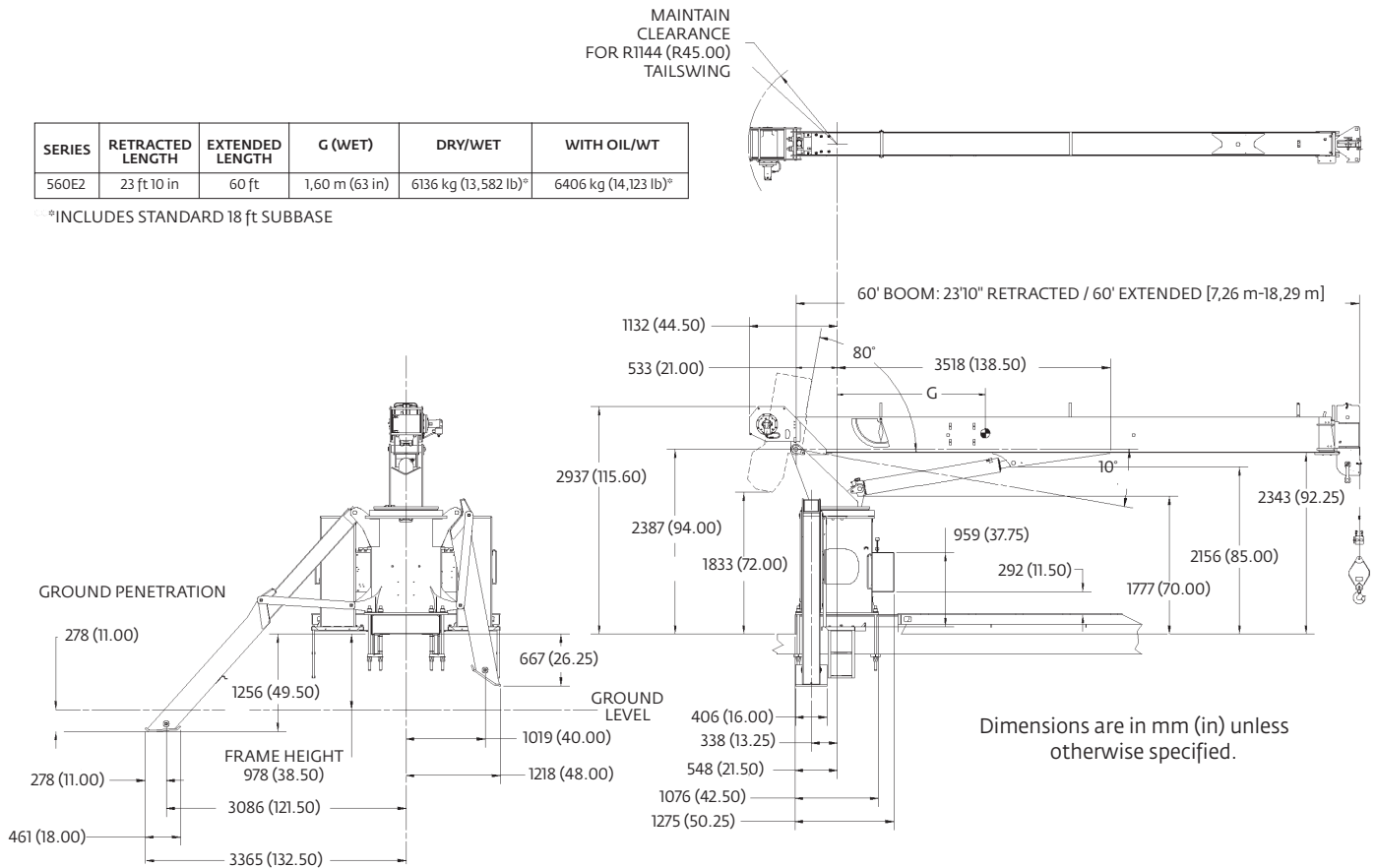
Load chart: 60 ft main boom, full span outrigger, with 23 ft - 41 ft jib

LOADED RADIUS (ft)	LOADED BOOM ANGLE (deg)	23 ft BOOM (lb)	LOADED BOOM ANGLE (deg)	A 33 ft BOOM (lb)	LOADED BOOM ANGLE (deg)	B 42 ft BOOM (lb)	LOADED BOOM ANGLE (deg)	C 51 ft BOOM (lb)	LOADED BOOM ANGLE (deg)	60 ft BOOM (lb)	LOADED BOOM ANGLE (deg)	23 ft JIB (lb)	LOADED BOOM ANGLE (deg)	41 ft JIB (lb)
5	75	36,000												
8	67	22,500	74	20,950										
10	61.5	18,900	70	18,050	75	17,500								
12	56	16,200	66.5	15,550	72.5	15,000	76	14,400						
14	50.5	14,100	63	13,650	69	13,150	74	12,600	77	10,950				
16	42	12,300	58.5	12,100	66.5	11,650	71.5	11,200	75.5	10,250				
20	23	8700	50	9800	60	9500	66.5	9150	71	8700	76	3450		
25			37.5	7600	52.5	7650	60.5	7350	66	7200	72.5	2850	76.5	2150
30			17	5050	43	6200	53.5	6100	60.5	6000	68	2400	73.5	1950
35					31	4900	46	5100	54.5	5050	65	2050	70.5	1600
40					8	2700	37	4200	48.5	4300	61	1750	67.5	1350
45							25.5	3300	41	3650	57	1500	64.5	1200
50									32.5	3000	53	1300	61.5	1050
55									21	2250	48.5	1150	58	900
60											43.5	1000	54.5	800
65											38	850	51	700
70											32	750	47	600
75											24	600	43	500
	0	4600	0	2900	0	1950	0	1300	0	850				

Dimensions

SERIES	RETRACTED LENGTH	EXTENDED LENGTH	G (WET)	DRY/WET	WITH OIL/WT
560E2	23 ft 10 in	60 ft	1,60 m (63 in)	6136 kg (13,582 lb)*	6406 kg (14,123 lb)*

*INCLUDES STANDARD 18 ft SUBBASE



More information about this product can be found in the *National Crane Series 500E2 Product Guide*.

Specifications

Boom

Comes equipped with a 18,29 m (60 ft) three-section boom. This model can be equipped with a 7,01 m - 12,50 m (23 ft - 41 ft) two-section jib.

Outriggers

The Series 500E2 comes equipped with "A" type boxed slide outriggers and ASH rear stabilizers. An optional center mounted single front stabilizer is available for 360° stability. Outriggers are equipped with a motion alarm and an outrigger monitoring system.

Controls

Dual side operator stations. Dual engine accelerators. Engine start/stop switches included. Emergency stop overrides located at control station.

Overload protection

National Crane boom trucks are equipped with overload protection. A hydraulic capacity alert system is standard on all 500E2 machines.

Torsion box

The stronger standard torsion box improves rigidity, reduces truck frame flex and reduces the need for counterweight.

Easy Glide Boom Wear Pads

Easy Glide boom wear pads reduce the conditions that cause boom chatter and vibration. The net result is smoother crane operation.

Optional speedy-reeve boom tip and sheave blocks

These features simplify rigging changes by decreasing the time needed to change line reeving.

Pre-painted components

Painting crane components before assembly reduces the possibility of rust, improves serviceability and enhances the appearance of the machine.

Serviceability

- Bearings on the boom extend and retract cables can be greased through access holes in the boom side plates

- Boom sections are supported by one hydraulic extend cylinder, minimizing maintenance

Hydraulic reservoir

Capacity of 66 gal