

# National Crane 1469H

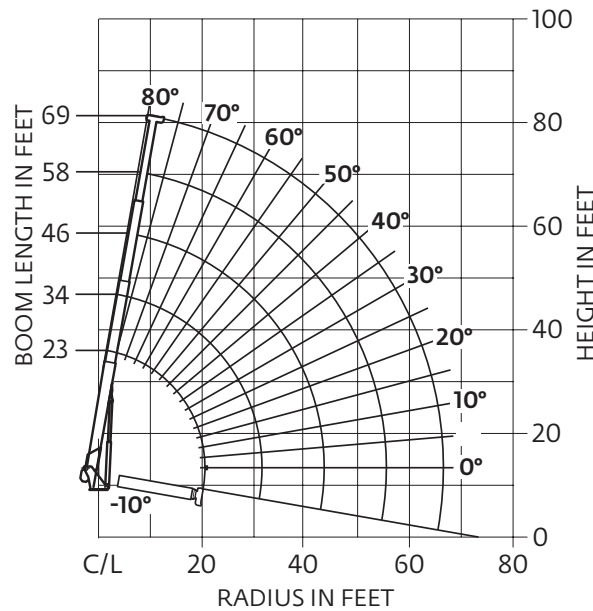
## Quick Reference

**Capacity:** 29,9 t (33 USt) rating

**Boom:** 21,03 m (69 ft)

- 23,03 m (76 ft) maximum tip height (main boom)

**Working range: 69 ft main boom, full span outrigger, without jib**



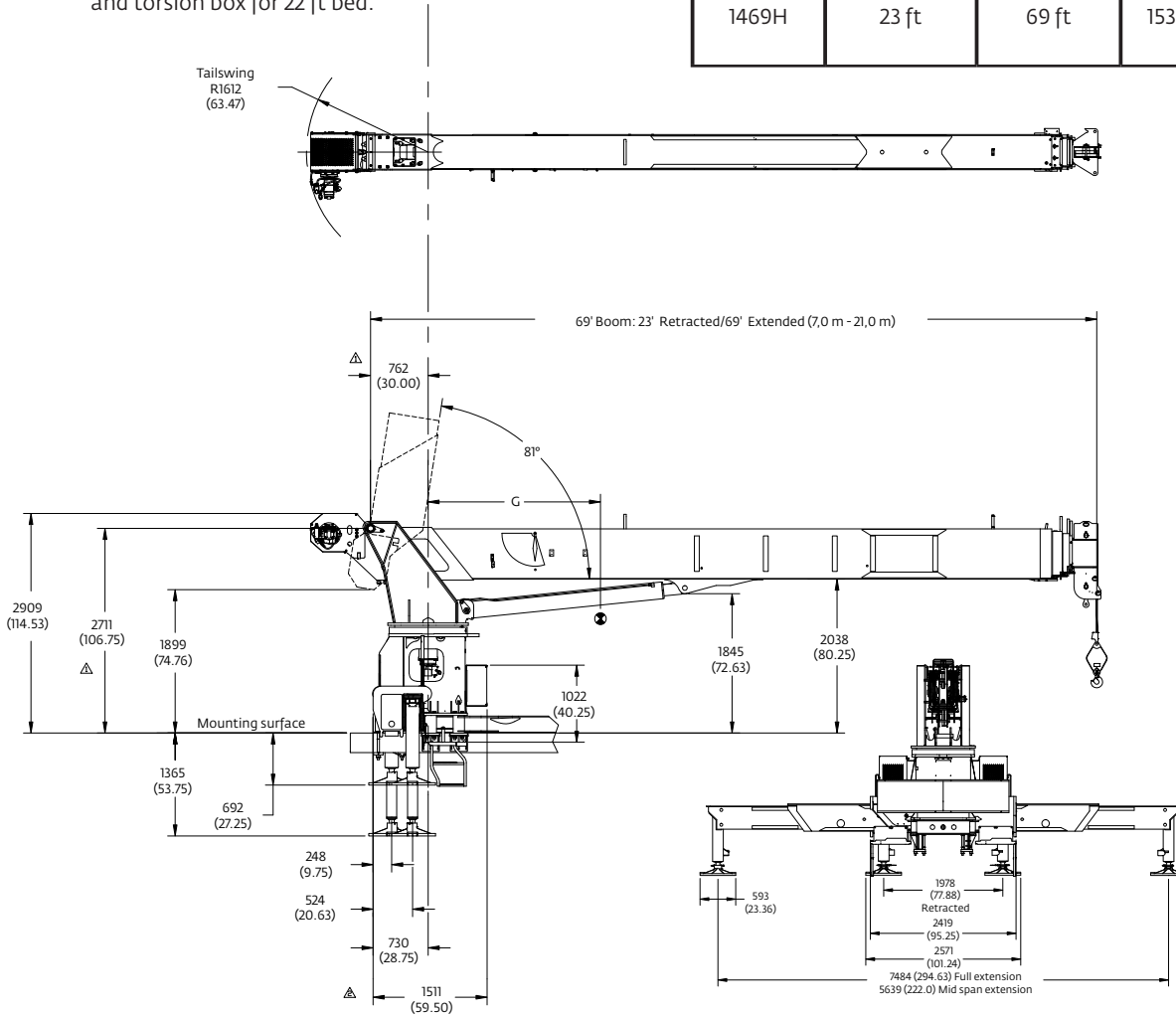
**Load chart: 69 ft main boom, full span outrigger, without jib**

LOADED RADIUS (ft)	LOADED BOOM ANGLE (deg)	23 ft BOOM (lb)	LOADED BOOM ANGLE (deg)	A 34 ft BOOM (lb)	LOADED BOOM ANGLE (deg)	B 46 ft BOOM (lb)	LOADED BOOM ANGLE (deg)	C 58 ft BOOM (lb)	LOADED BOOM ANGLE (deg)	69 ft BOOM (lb)
6	74.5	66,000								
8	69	60,050	76.5	56,300						
10	63	52,050	73	48,350	78	46,100				
12	57	46,000	69.5	42,500	75.5	40,300	79	35,600		
14	50	41,150	65.5	38,000	73	35,850	77	32,550	79.5	25,700
16	42	36,950	61.5	34,400	70	32,350	75	29,500	77.5	23,850
20	15	26,550	52.5	28,950	64.5	27,150	70.5	24,950	74.5	21,200
25			40	21,450	57	21,700	65	20,900	69.5	17,200
30			19	15,450	49	15,750	59.5	15,900	65	15,100
35					39	12,050	53	12,200	60	12,200
40					25.5	9550	46	9650	55	9700
45							38.5	7900	50	7950
50							28.5	6550	43.5	6600
55							11	5500	36.5	5500
60									28	4650
65									16	3950
	0	19,750	0	12,150	0	8350	0	5450	0	3750

## Dimensions

\*Wet weight includes boom with winch, loadline, 180 lb downhaul weight, frame, turret, complete console, hoses, mounting hardware, outriggers, platforms, lift cylinder, and torsion box for 22 ft bed.

	Retracted	Extended	G	wet/wt*
Series	Length	Length	cm (in)	kg (lb)
1469H	23 ft	69 ft	153 (60.2)	10 182 (22,448)



*More information about this product can be found in the National Crane Series 1400H Product Guide.*

## Specifications

### Boom

Comes equipped with a 21,03 m (69 ft) four-section boom.

### Outriggers

Outrigger span of 7,5 m (24 ft 6 in) when fully extended; 5,63 m (18 ft 6 in) at mid-span. The 1400H outriggers allow quick and easy crane set-up and can be positioned at 0%, 50% and 100%.

### Overload protection

National Crane boom trucks are equipped with overload protection. A Load Moment Indicator (LMI) is standard on all 1400H machines. The LCD display is visible in full or low light and displays all crane load lifting values simultaneously.

### Torsion box

The stronger standard torsion box improves rigidity, reduces truck frame flex and reduces the need for counterweight.

### Easy Glide Boom Wear Pads

Easy Glide boom wear pads reduce the conditions that cause boom chatter and vibration. The net result is smoother crane operation.

### Speedy-reeve boom tip and sheave blocks

These standard features simplify rigging changes by decreasing the time needed to change line reeving.

### Pre-painted components

Painting crane components before assembly reduces the possibility of rust, improves serviceability and enhances the appearance of the machine.

### Control valve

State of the art control valve provides smoother operation. The new design eliminates parts, reducing repair costs and improving the machines serviceability.

### Serviceability

- Bearings on the boom extend and retract cables can be greased through access holes in the boom side plates

- Boom sections are supported by one hydraulic extend cylinder, minimizing maintenance

### Hoist

- “Burst of speed” hoist.