

National Crane 14127H

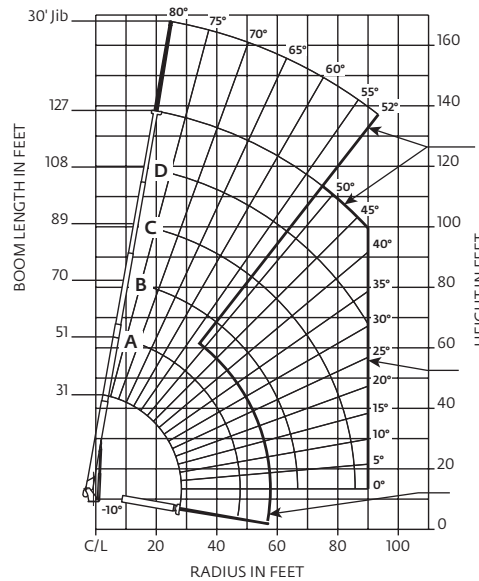
Quick Reference

Capacity: 29,9 t (33 USt) rating

Boom: 38,72 m (127 ft)

- 40,8 m (13.4 ft) maximum tip height (main boom)
- 50,0 m (164 ft) maximum tip height (main boom and single-section jib)

Working range: 127 ft main boom, with 30 ft jib and full span outrigger



Load chart: 127 ft main boom, with 30 ft jib and full span outrigger

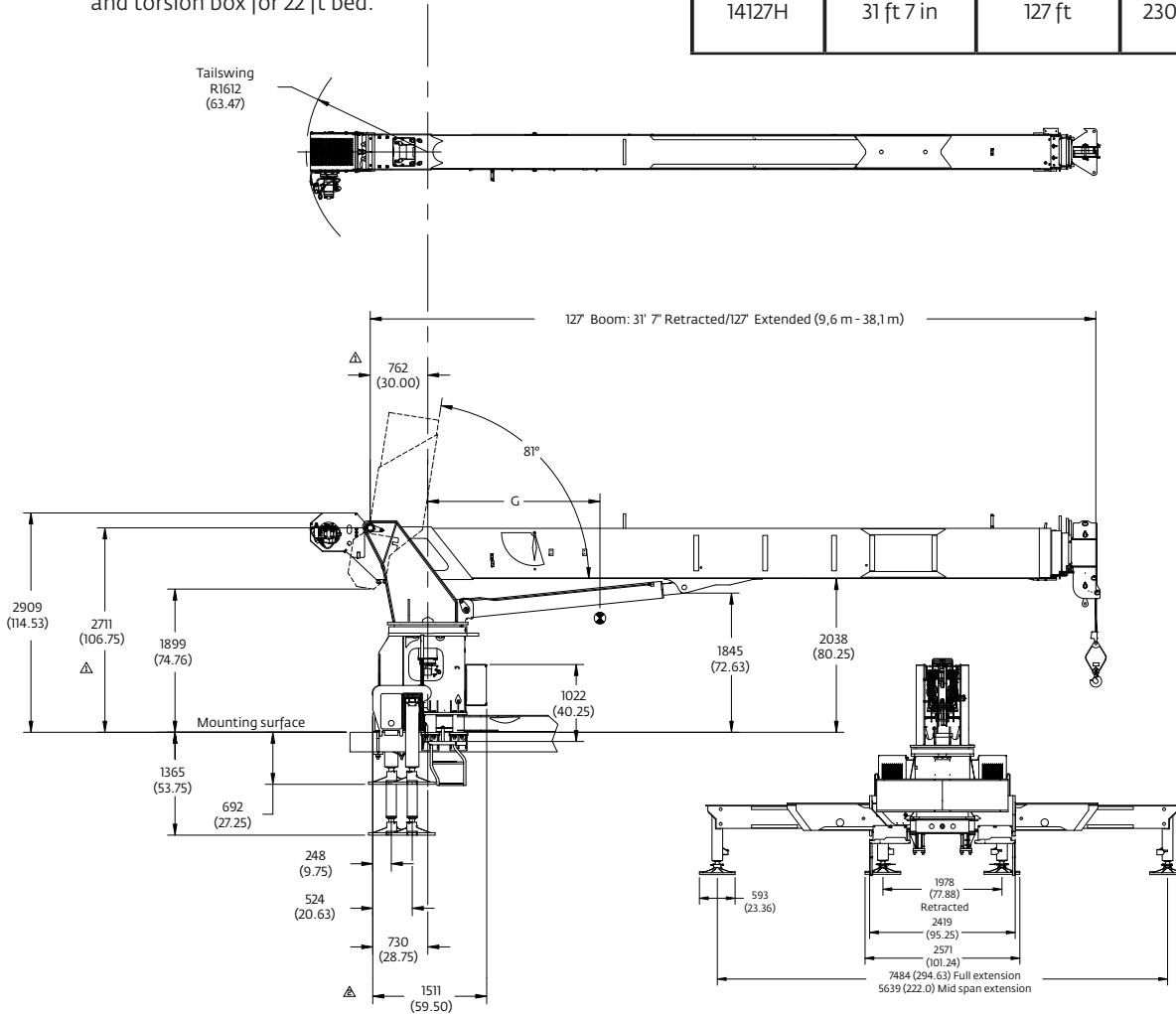
LOAD RADIUS (ft)	LOADED BOOM ANGLE	31 ft BOOM (lb)	LOADED BOOM ANGLE	A 51 ft BOOM (lb)	LOADED BOOM ANGLE	B 70 ft BOOM (lb)	LOADED BOOM ANGLE	C 89 ft BOOM (lb)	LOADED BOOM ANGLE	D 108 ft BOOM (lb)	LOADED BOOM ANGLE	127 ft BOOM (lb)
6	79.9	66,000										
8	76	47,550										
10	71.9	40,750	79.7	32,700								
12	67.7	35,800	77.4	29,750								
15	61.1	30,200	72.8	25,900	78.1	22,550						
20	49.5	23,950	67.7	20,450	74.8	18,950	78.8	16,600				
25	33.1	17,700	61.2	16,750	70.4	15,350	74.7	14,200	78.1	12,250	80.3	8200
30			54.1	14,000	65.9	12,850	72.2	11,850	76.1	10,550	78.5	7900
35			46.2	10,550	61.1	10,650	68.6	9700	73.6	9050	76.4	7600
40			36.5	8100	55.2	8350	64.3	8300	69.8	7850	73.8	7200
45			25.7	6250	50.9	6500	61.5	6700	67.8	6750	71.5	6400
50					45	5100	57.4	5300	64.6	5400	69.5	5500
55					38.3	4000	53.2	4200	61.4	4300	66.8	4400
60					29.8	3150	48.1	3300	57.4	3400	63.6	3500
65					19.1	2400	44	2600	54.6	2700	61.3	2800
70							38.7	2000	51.1	2100	58.4	2150
75							32.6	1450	47.3	1550	55.5	1650
80							24.5	1000	43.2	1100	52.2	1200
85							14	650	38.9	750	49.4	800
90											45.6	500
	0	12,150	0	4800	0	2000	0	500				
ADDTO CAPACITIES WHEN NO JIB STOWED (lb)		500		300		250		200		150		100

LOAD RADIUS (ft)	LOADED BOOM ANGLE	30 ft JIB (lb)
30	79.9	3900
35	79.1	3850
40	77.5	3700
45	75.9	3550
50	74.2	3400
55	72.5	3250
60	70.7	3100
65	68.9	2950
70	66.4	2600
75	64.4	2050
80	62.1	1600
85	59.7	1200
90	57.3	850
95	54.8	550

Dimensions

*Wet weight includes boom with winch, loadline, 180 lb downhaul weight, frame, turret, complete console, hoses, mounting hardware, outriggers, platforms, lift cylinder, and torsion box for 22 ft bed.

	Retracted	Extended	G	wet/wt*
Series	Length	Length	cm (in)	kg (lb)
14127H	31 ft 7 in	127 ft	230 (90.4)	12 869 (28,371)



More information about this product can be found in the National Crane Series 1400H Product Guide.

Specifications

Boom

Comes equipped with a 38,72 m (127 ft) five-section boom. Also available is the optional 9,15 m (30 ft) single section jib.

Outriggers

Outrigger span of 7,5 m (24 ft 6 in) when fully extended; 5,63 m (18 ft 6 in) at mid-span. The 1400H outriggers allow quick and easy crane set-up and can be positioned at 0%, 50% and 100%.

Overload protection

National Crane boom trucks are equipped with overload protection. A Load Moment Indicator (LMI) is standard on all 1400H machines. The LCD display is visible in full or low light and displays all crane load lifting values simultaneously.

Torsion box

The stronger standard torsion box improves rigidity, reduces truck frame flex and reduces the need for counterweight.

Easy Glide Boom Wear Pads

Easy Glide boom wear pads reduce the conditions that cause boom chatter and vibration. The net result is smoother crane operation.

Speedy-reeve boom tip and sheave blocks

These standard features simplify rigging changes by decreasing the time needed to change line reeving.

Pre-painted components

Painting crane components before assembly reduces the possibility of rust, improves serviceability and enhances the appearance of the machine.

Control valve

State of the art control valve provides smoother operation. The new design eliminates parts, reducing repair costs and improving the machines serviceability.

Serviceability

- Bearings on the boom extend and retract cables can be greased through access holes in the boom side plates
- Boom sections are supported by one hydraulic extend cylinder, minimizing maintenance

Hoist

“Burst of speed” hoist.