

National Crane 14100H

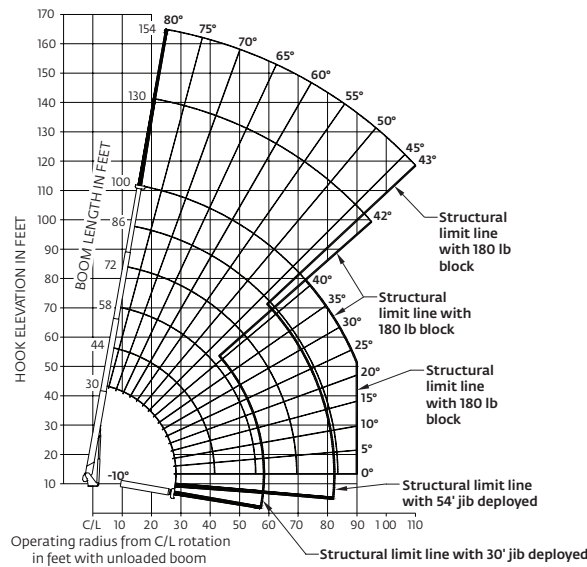
Quick Reference

Capacity: 29,9 t (33 USt) rating

Boom: 30,49 m (100 ft)

- 32,6 m (107 ft) maximum tip height (main boom)
- 41,77 m (137 ft) maximum tip height (main boom and single-section jib)
- 49,08 m (161 ft) maximum tip height (main boom and two-section jib)

Working range: 100 ft main boom, with 54 ft jib and full span outrigger



Load chart: 100 ft main boom, with 54 ft jib and full span outrigger

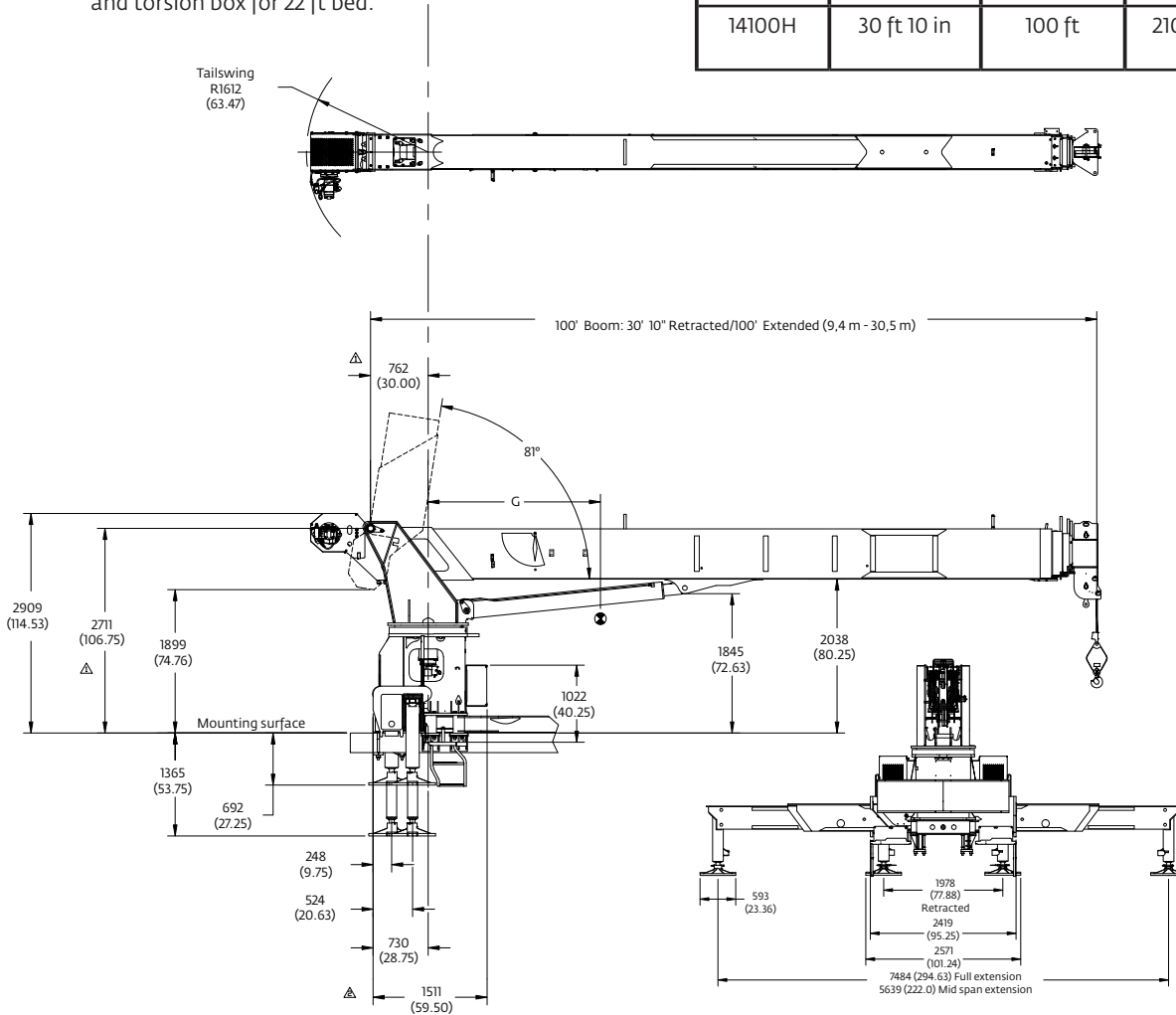
LOAD RADIUS (ft)	LOADED BOOM ANGLE	30 ft BOOM (lb)	LOADED BOOM ANGLE	A 44 ft BOOM (lb)	LOADED BOOM ANGLE	B 58 ft BOOM (lb)	LOADED BOOM ANGLE	C 72 ft BOOM (lb)	LOADED BOOM ANGLE	D 86 ft BOOM (lb)	LOADED BOOM ANGLE	100 ft BOOM (lb)
6	79.1	66,000										
8	74.9	49,200										
10	70.6	42,200	77.2	37,900								
12	66.3	38,600	74.9	33,400	79.2	29,550						
14	61.7	34,200	72.1	29,400	77.1	26,550	80	23,050				
16	56.8	30,350	69.2	26,900	75.1	24,550	78.6	21,050				
20	46	23,550	63.3	21,400	70.8	19,250	75.3	18,050	78.4	16,800	80	11,600
25	27.4	16,700	55.2	17,400	65.3	16,050	71	14,650	74.9	13,700	77.3	10,950
30			46.1	13,900	59.5	13,550	66.7	12,550	71.3	11,450	74.5	10,550
35			35	10,350	53.1	10,650	61.9	10,550	67.7	9900	71.8	9150
40			20	8000	46.8	8250	57.6	8400	64.3	8550	68.4	8050
45					38.8	6500	52.4	6650	60.1	6750	65.3	6850
50					29	5150	46.7	5300	55.9	5400	61.9	5500
55					12.3	4150	40.4	4250	51.5	4400	58.3	4450
60							33.2	3400	46.7	3550	54.6	3600
65							23.8	2750	41.5	2850	50.7	2900
70									35.7	2250	46.6	2300
75									28.8	1750	42.2	1800
80									19.6	1350	37.3	1400
85											31.8	1050
90											25.2	700
	0	11,400	0	7300	0	4000	0	1850	0	900		
ADD TO CAPACITIES WHEN NO JIB STOWED (lb)		800		600		450		350		300		250

LOAD RADIUS (ft)	LOADED BOOM ANGLE	30 ft JIB (lb)	LOADED BOOM ANGLE	54 ft JIB (lb)
30	78.4	5500		
35	76.5	5450	78.5	2650
40	74.6	5400	76.9	2600
45	72.4	5100	75.2	2500
50	70.1	4600	73.4	2400
55	67.8	4250	71.6	2300
60	65.5	3900	69.8	2200
65	62.7	3200	67.9	2100
70	59.9	2600	66	2000
75	57.1	2050	64	1850
80	54.1	1650	61.8	1750
85	51.1	1250	59.6	1600
90	47.9	950	57.4	1500
95	44.5	650	54.8	1200
100			52.2	950
105			49.4	700
110			46.6	500

Dimensions

*Wet weight includes boom with winch, loadline, 180 lb downhaul weight, frame, turret, complete console, hoses, mounting hardware, outriggers, platforms, lift cylinder, and torsion box for 22 ft bed.

	Retracted	Extended	G	wet/wt*
Series	Length	Length	cm (in)	kg (lb)
14100H	30 ft 10 in	100 ft	210 (82.7)	11 626 (25,631)



More information about this product can be found in the National Crane Series 1400H Product Guide.

Specifications

Boom

Comes equipped with a 30,49 m (100 ft) four-section boom. Also available are optional 9,15 m (30 ft) single section jib or a 16,46 m (54 ft) two-section jib.

Outriggers

Outrigger span of 7,5 m (24 ft 6 in) when fully extended; 5,63 m (18 ft 6 in) at mid-span. The 1400H outriggers allow quick and easy crane set-up and can be positioned at 0%, 50% and 100%.

Overload protection

National Crane boom trucks are equipped with overload protection. A Load Moment Indicator (LMI) is standard on all 1400H machines. The LCD display is visible in full or low light and displays all crane load lifting values simultaneously.

Torsion box

The stronger standard torsion box improves rigidity, reduces truck frame flex and reduces the need for counterweight.

Easy Glide Boom Wear Pads

Easy Glide boom wear pads reduce the conditions that cause boom chatter and vibration. The net result is smoother crane operation.

Speedy-reeve boom tip and sheave blocks

These standard features simplify rigging changes by decreasing the time needed to change line reeving.

Pre-painted components

Painting crane components before assembly reduces the possibility of rust, improves serviceability and enhances the appearance of the machine.

Control valve

State of the art control valve provides smoother operation. The new design eliminates parts, reducing repair costs and improving the machines serviceability.

Serviceability

- Bearings on the boom extend and retract cables can be greased through access holes in the boom side plates
- Boom sections are supported by one hydraulic extend cylinder, minimizing maintenance

Hoist

“Burst of speed” hoist.